

## Stream200 Record/Playback System



### Introduction

Stream200 is a turn-key IF record and playback system ideal for Radar, Software Radio, Communication and SatComm etc. applications.

It is based on 10+ years of experience in data recording technology, and its key focus is on data continuity, signal fidelity and system quality. This system has passed stringent acceptance test and provides user with a high fidelity signal acquisition system.

Leveraging high quality and comprehensive signal acquisition products, Stream series offers customers a complete series of turn-key solutions for different sampling rate, channel count and resolution requirements. It supports Windows OS as standard, and Linux as an option.

In Stream200, it supports either wide-band DDC or multi-band DDC in FPGA. In multi-band DDC mode, each ADC support 8ch narrow band DDC, DDC bandwidth is up to 10MHz. The data are saved in either real or complex I/Q format.

Stream200 supports PPS Marker function, which makes it ideal for Radar signal acquisition. It can record into single or multiple small files, which makes it easy for recording file management. All the data recorded are guaranteed no data loss.

### Applications

- Software Defined Radio
- Communication, SatCom
- Digital Beam-forming
- Radar

### Features and Specifications of Record

- 3Ch 200MHz 16bit ADC for Recording
- Wide-band Digital Down Convert, BW = 2.5KHz to 80MHz
- (option) 8ch narrow-band DDC per ADC input, BW = 20KHz to 10MHz per channel
- Supports Real and Complex Recording Mode
- >90dB SFDR
- Supports Recording in Real/Complex Mode
- Windows OS and NTFS
- Recorded into single or multiple files, and accessible by network

### Features and Specifications of Playback

- 400MHz 16bit DAC for Playback
- Playback in 1Ch Complex or 2Ch Real Mode
- 1Ch DUC with interpolation(2 to 64K) and programmable output IF
- BW = 2.5KHz to 80MHz

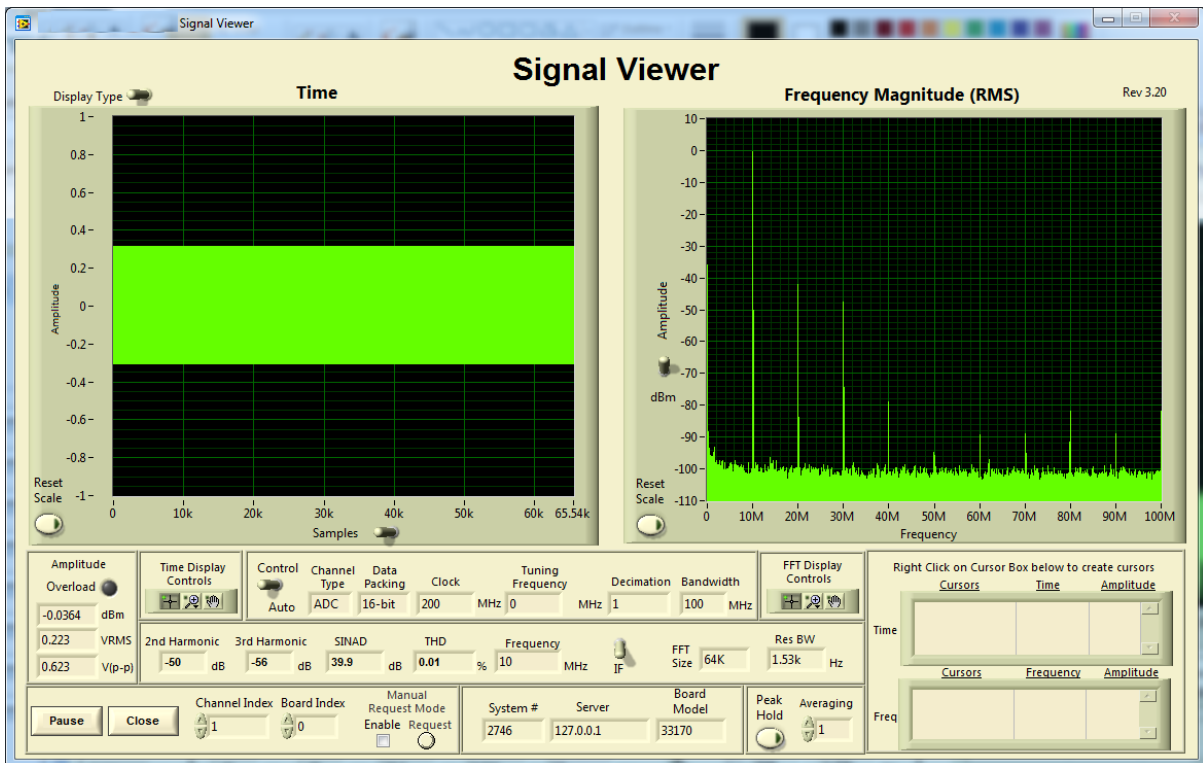


Figure 1:  $F_s=200\text{MS/s}$ ,  $F_{in}=10\text{MHz}$ ,  $\text{SFDR}>90\text{dB}$ , excellent noise floor

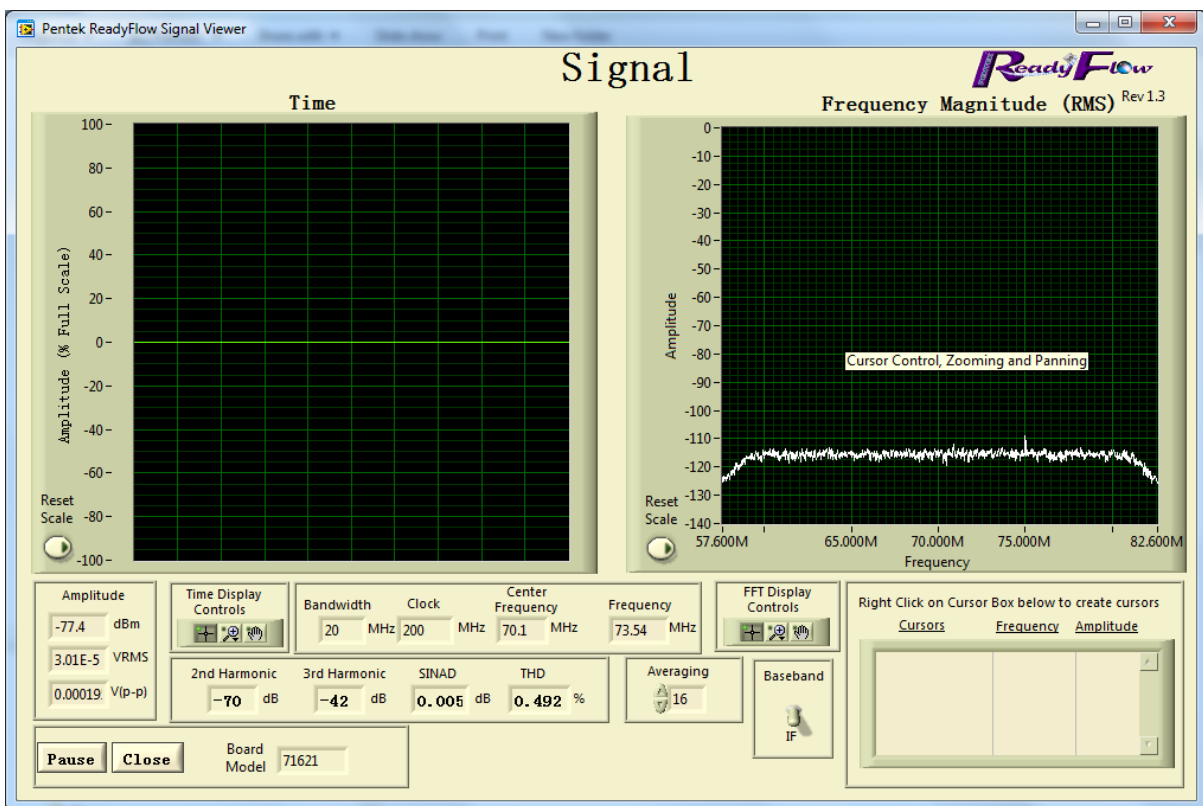


Figure 2: DDC mode, Tune to 70MHz IF, 20MHz BW

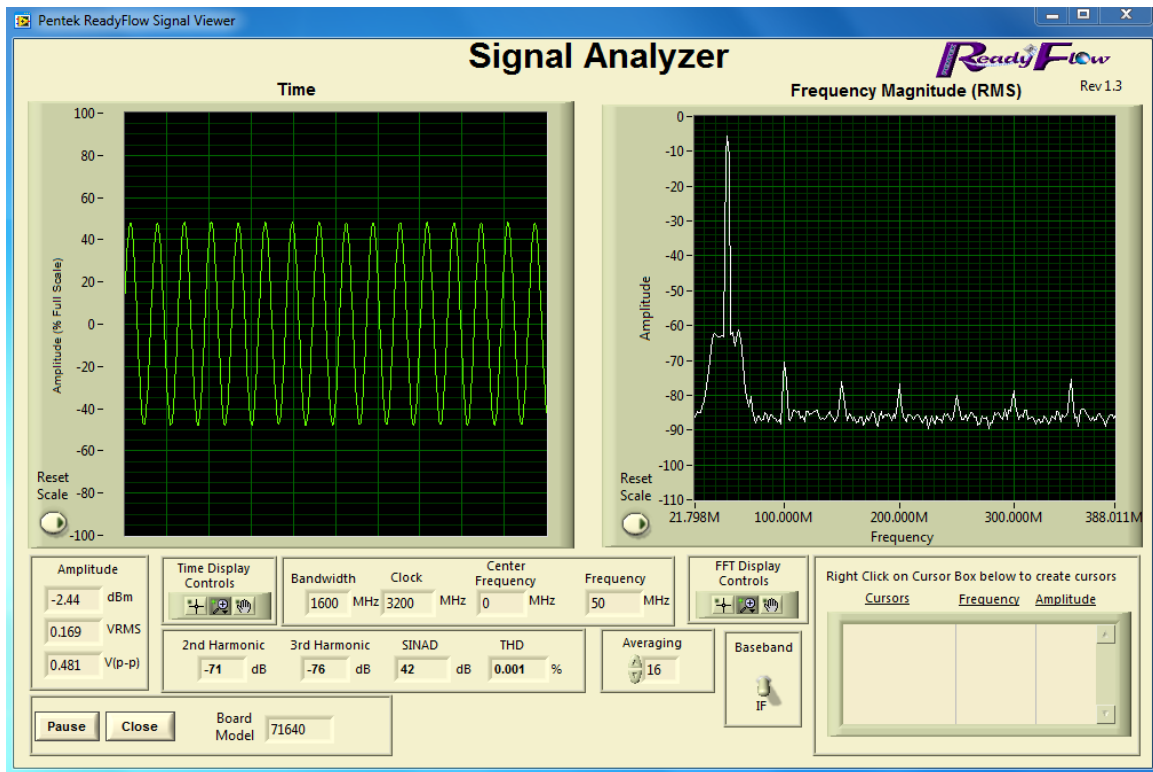


Fig 3, Signal Playback plots, Fout=50MHz,SFDR=65dBc

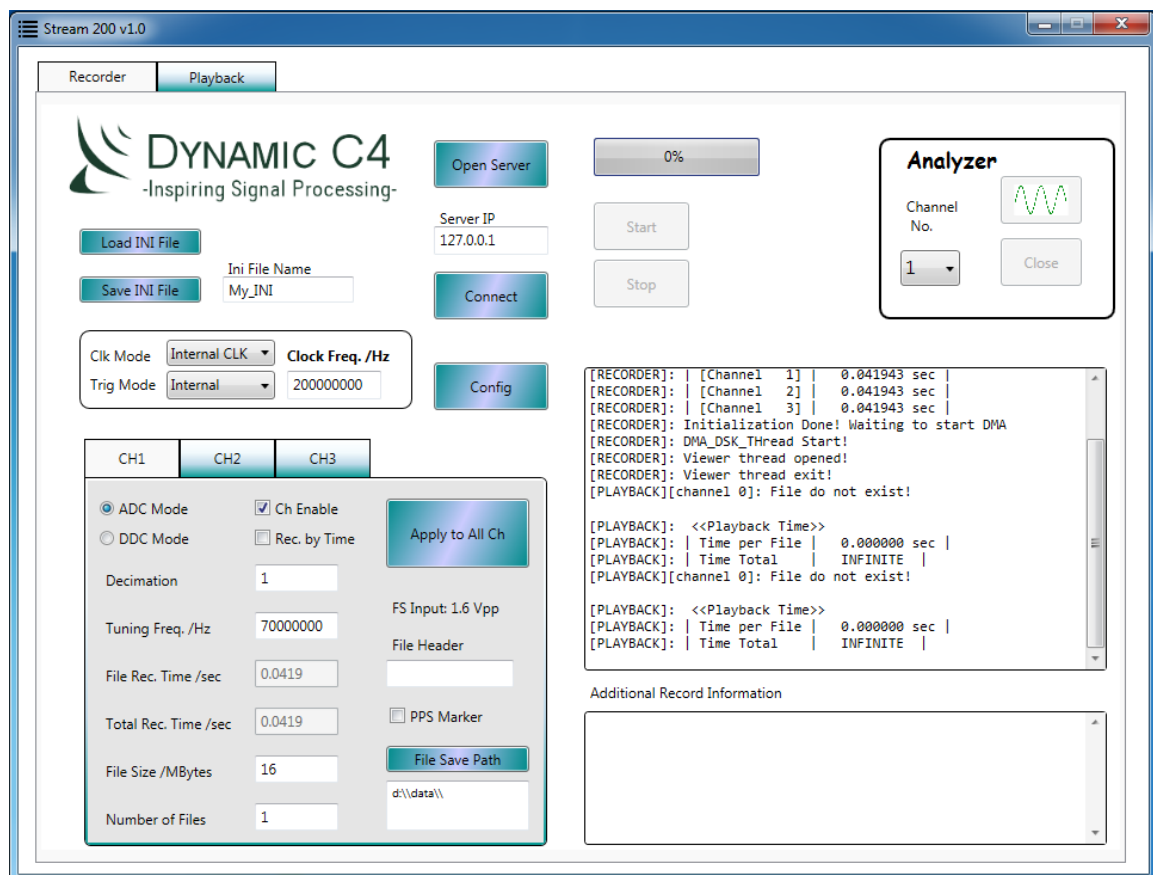


Figure 3: Intuitive GUI for Record/Playback Control

## Order Information

Model No.	Specifications
<b>Streaming200</b>	200MHz 16bit Recorder, support DDC
-opt 3Ch	- 3Ch Recording
-opt 4Ch	- 4Ch Recording
-opt 8Ch –WB	- 8Ch Recording, support 8Ch WB DDC
-opt 8Ch –NB	- 8Ch Recording, support 64Ch NB DDC
-opt Playback	- 2Ch 200MSps Playback in Real/ 1Ch playback in Complex

### Portable Chassis



Dimension: 43 x 24 x 34 (cm)

Weight: About 15Kg

### 19" Rackmount



Dimension: 48 x 54 x 18(cm) (19" x 4U)

Weight: About 25Kg

### Dynamic C4 Pte Ltd.

Address: 3 Science Park Drive, #04-11C,

The Franklin, Singapore Science Park I

Singapore 118223

Tel: +65 9338 2201

Fax: +65 6877 0838

Email: [sales@DynamicC4.com](mailto:sales@DynamicC4.com)

Web: [www.DynamicC4.com](http://www.DynamicC4.com)

Dynamic C4 Pte Ltd. reserves the right to change the product info with no prior notice.

All the trademarks are the property of their respective registered owner.