

## Stream500 Record/Playback System



### Introduction

Stream500 is a turn-key IF record and playback system ideal for Radar, Software Radio, Spectrum Monitoring etc. applications.

It is based on 10+ years of experience in data recording technology, and its key focus is on data continuity, signal fidelity and system quality. This system has passed stringent acceptance test and provides user with a high fidelity signal acquisition system.

Leveraging high quality and comprehensive signal acquisition products, Stream series offers customers a complete series of turn-key solutions for different sampling rate, channel count and resolution requirements. It supports Windows OS as standard, and Linux as an option.

In Stream500, it supports wide-band Digital Down Conversion in FPGA. The signal bandwidth can be from 3.125KHz to 200MHz. The data are saved in either real or complex I/Q format.

Stream500 supports PPS Marker function, which makes it ideal for Radar signal acquisition. It can record into single or multiple small files, which makes it easy for recording file management. All the data recorded are guaranteed no data loss.

### Applications

- Wide band Radar
- Software Defined Radio and SatCom
- Spectrum Monitoring

### Features and Specifications of Record

- 2Ch 500MHz 12bit ADC
- (option) 2Ch 400MHz 14bit ADC
- 2Ch wide-band Digital Down Convert, BW = 3.125KHz to 200MHz
- Supports Real and Complex Recording Mode
- Typical SNR = 65.4dB, SFDR = 80dB (Fin=70MHz)
- Windows OS with NTFS File System
- Recorded into single or multiple files

### Features and Specifications of Playback

- 500MHz 16bit DAC w/ Interpolate = 2
- 250MS/s real or complex data rate
- Playback in 1Ch Complex or 2Ch Real Mode
- 1Ch DUC with interpolation(2 to 64K) with programmable IF output frequency
- Bandwidth from 3.125KHz to 200MHz

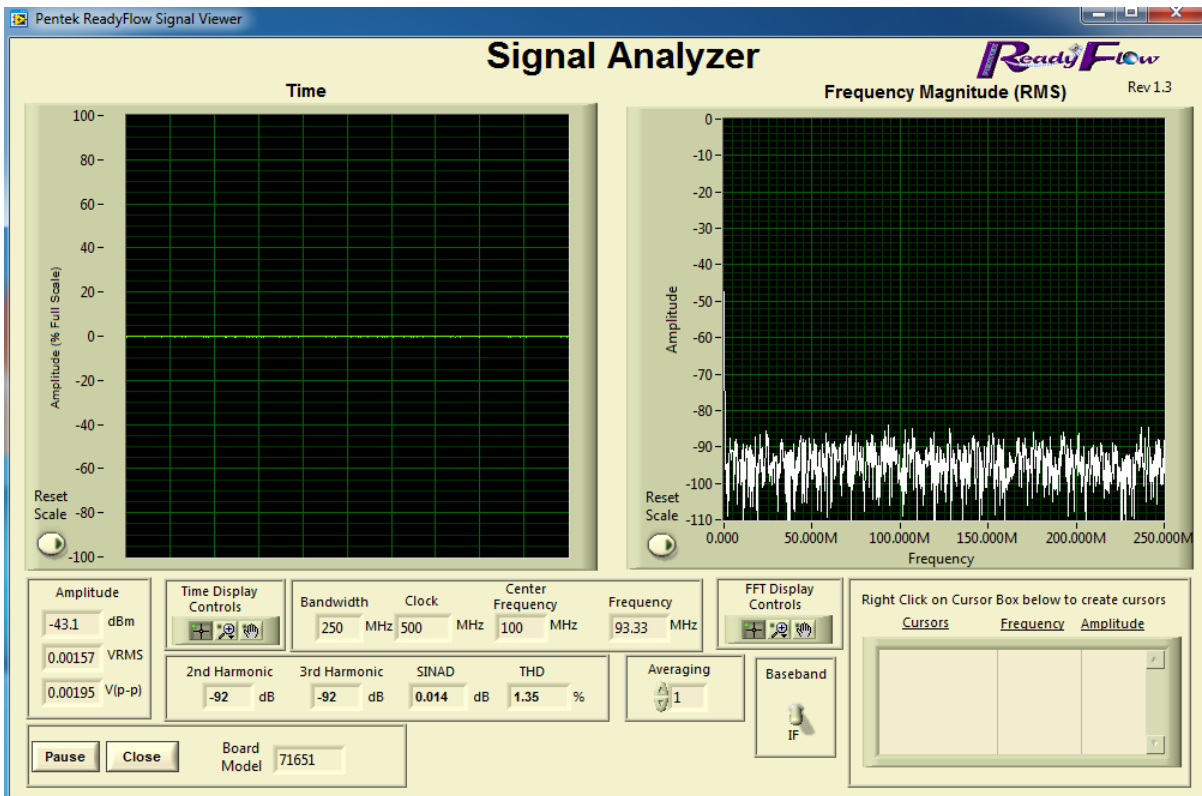


Figure 1: 500MS/s sampling in real mode, clean noise floor.

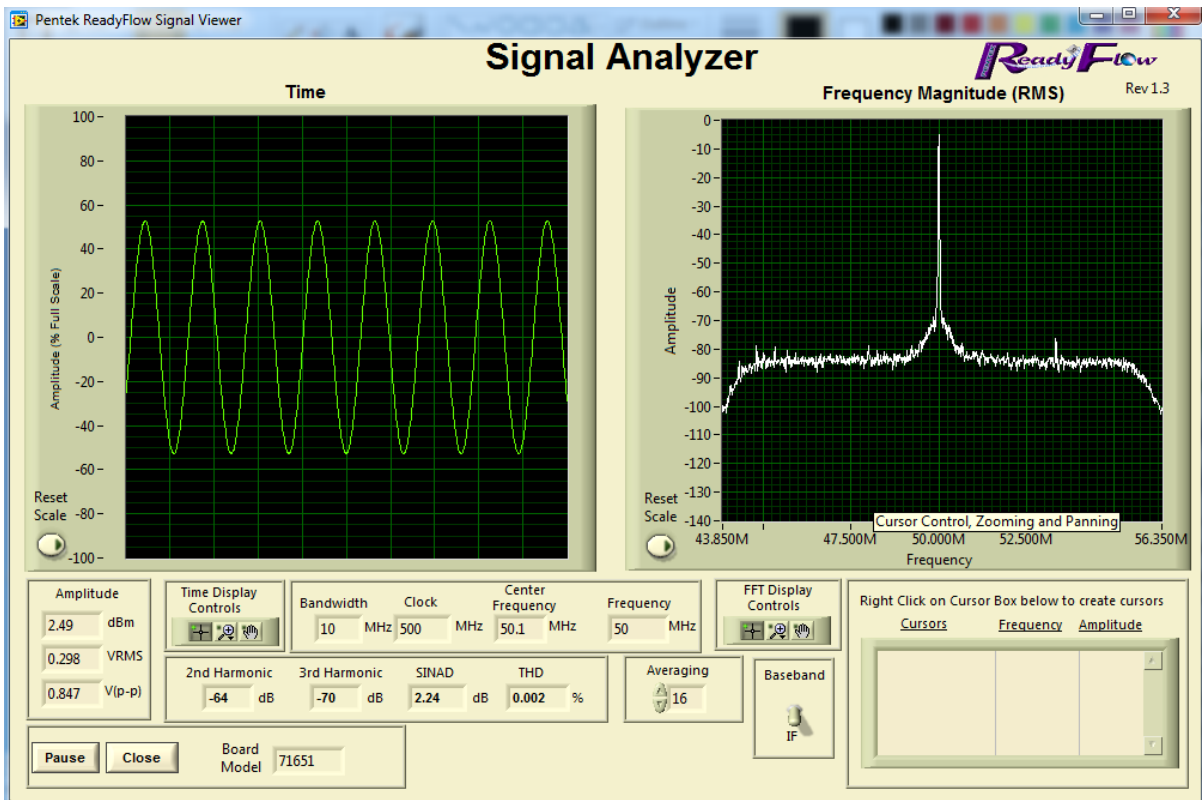


Figure 2: Tune to 50MHz IF, 10MHz BW.

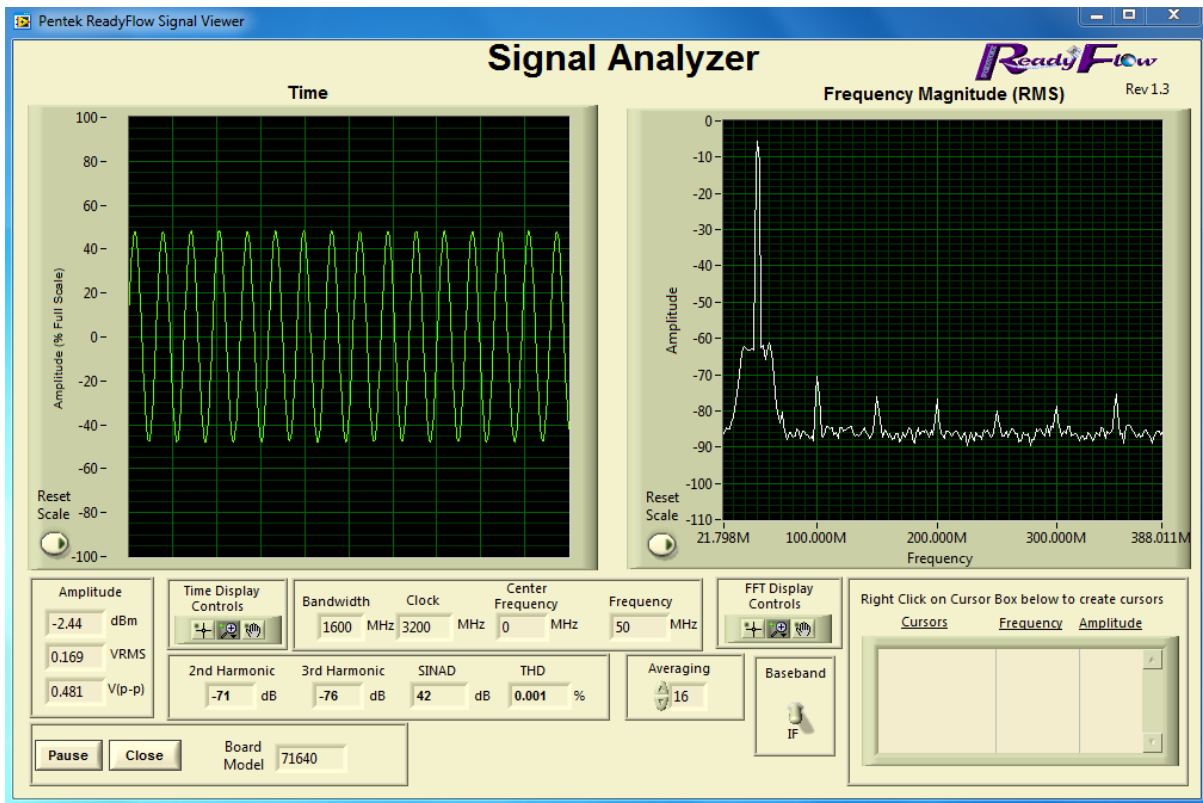


Figure 3: Playback Waveform at 50MHz(with Band Pass Filter)

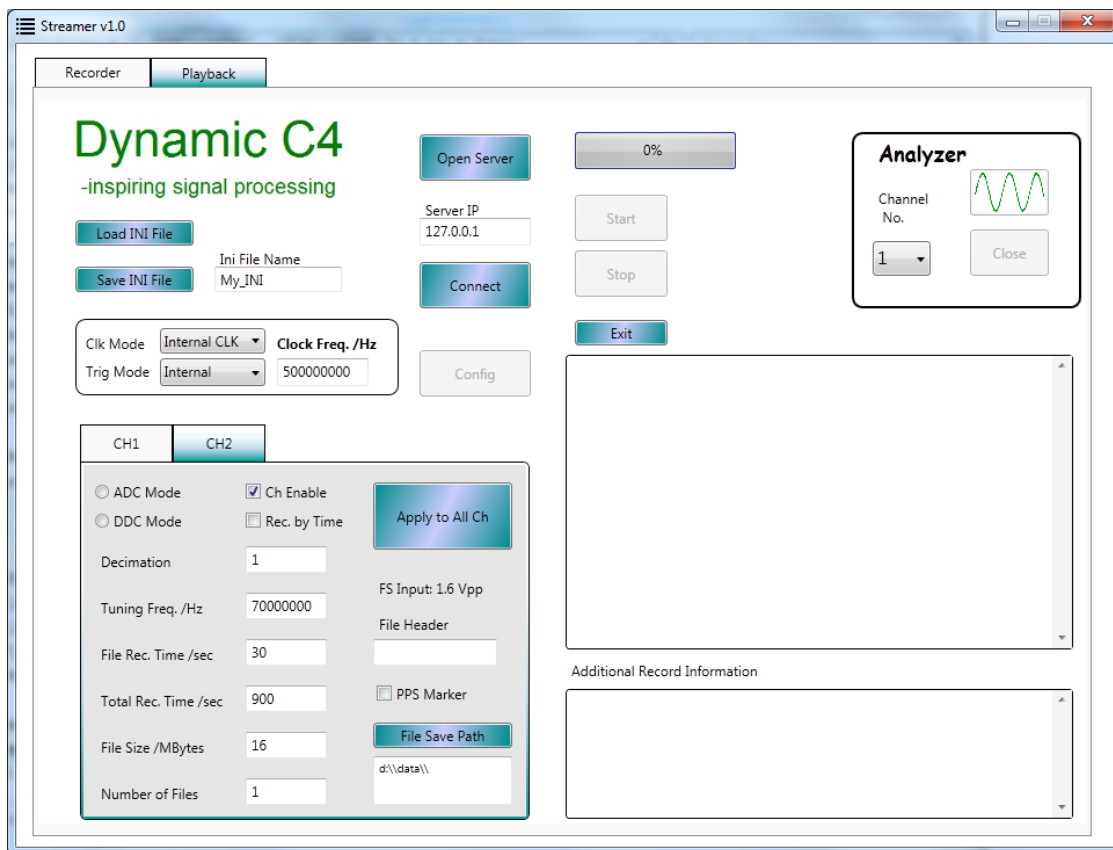


Figure 4: Intuitive GUI for Stream500 Record/Playback Control

## Order Information

Model No.	Specifications
<b>Streaming400</b>	400MHz 14bit Recorder, support DDC
-opt 2Ch	- 2Ch Recording.
-opt Playback	- 2Ch 400MSps Playback in Real/ 1Ch playback in Complex
<b>Streaming500</b>	500MHz 12bit Recorder, support DDC
-opt 2Ch	- 2Ch Recording.
-opt Playback	- 2Ch 500MSps Playback in Real/ 1Ch playback in Complex

### Portable Chassis



Dimension: 43 x 24 x 34 (cm)

Weight: About 15Kg



### 19" Rackmountable

Dimension: 48 x 54 x 18(cm) (19" x 4U)

Weight: About 25Kg

For product, pricing or demo request, please contact:

**Dynamic C4 Pte Ltd.**

Address: 3 Science Park Drive, #04-11C,

The Franklin, Singapore Science Park I

Singapore 118223

Tel: +65 9338 2201

Fax: +65 6877 0838

Email: [sales@DynamicC4.com](mailto:sales@DynamicC4.com)

Web: [www.DynamicC4.com](http://www.DynamicC4.com)

Dynamic C4 Pte Ltd. reserves the right to change the product info with no prior notice. All the trademarks are the property of their respective registered owner.